

# **Safer Stronger Communities Select Committee – Presentations at Meeting 21 September 2017**

<b>Item</b>		<b>Pages</b>
4.	Evidence Session - Provision for the LGBT Community in Lewisham	1 - 8

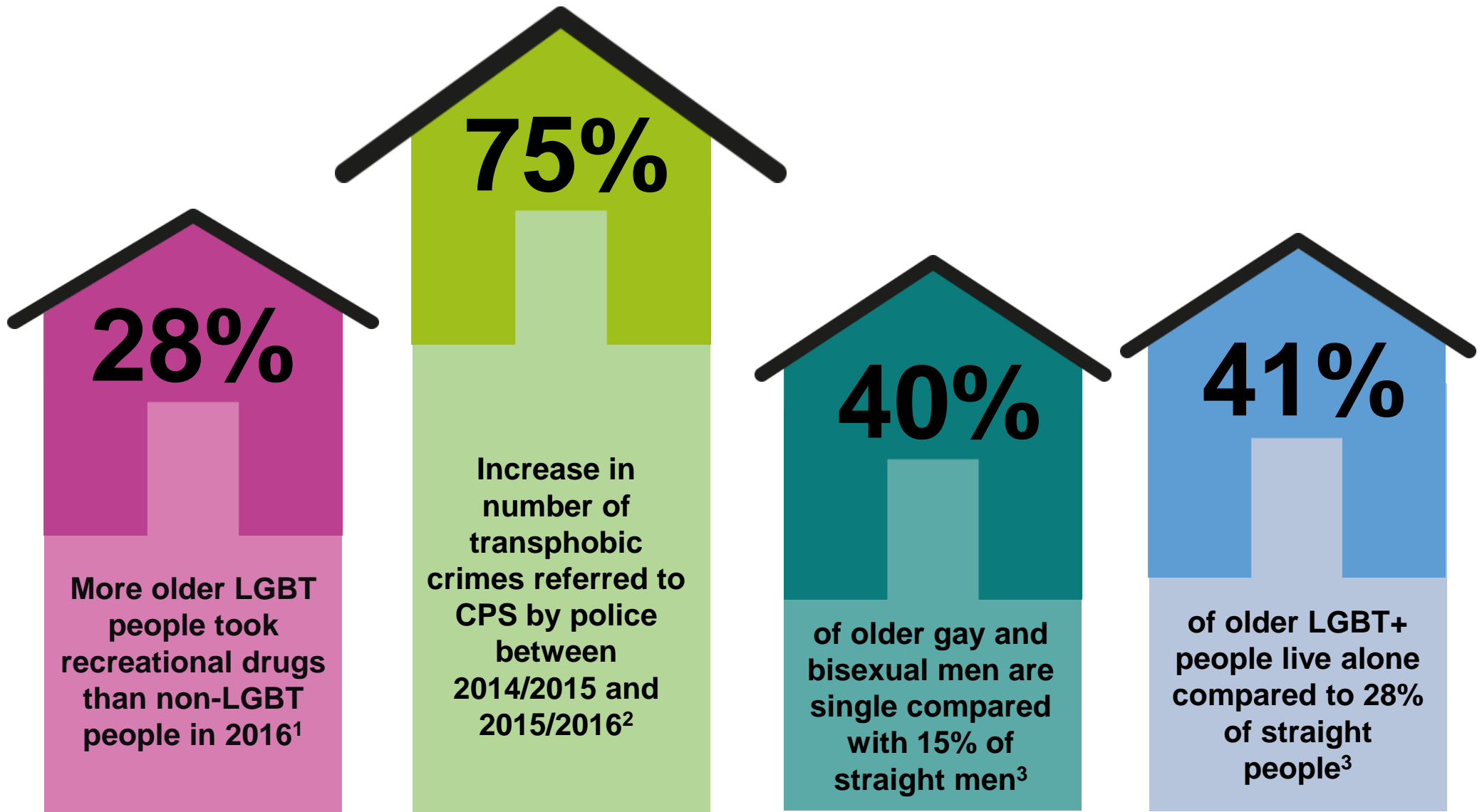
This page is intentionally left blank

# TONIC

A fresh approach to LGBT+ older living

James Greenshields

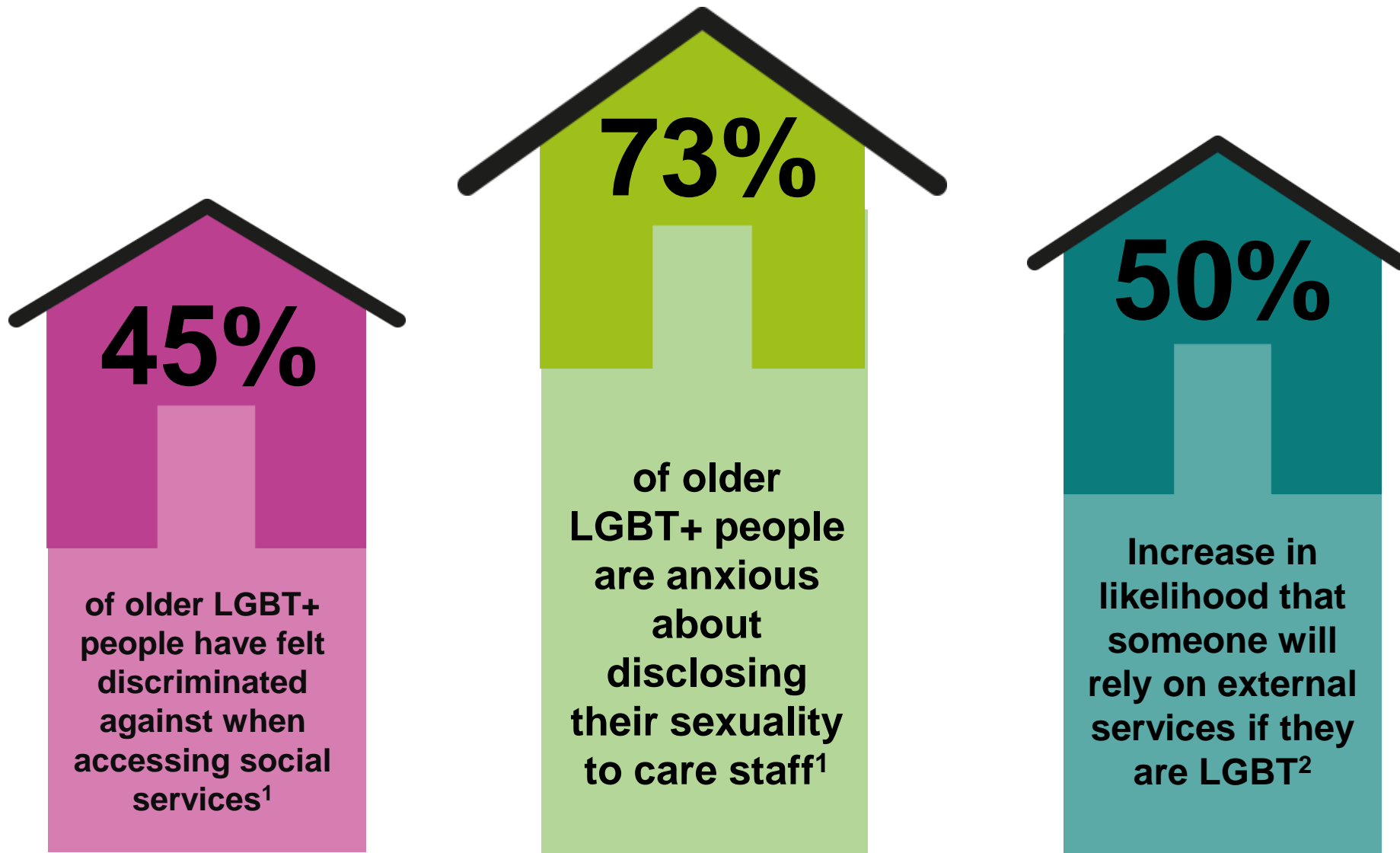
Who will care for  
you when you get  
older?



<sup>1</sup> Stonewall (2017) 'LGBT in Britain: Hate Crime and Discrimination.'

<sup>2</sup> CPS Hate Crime Report 2014/2015 and 2015/2016

<sup>3</sup> Stonewall 2011 'Lesbian, Gay and Bisexual People in Later Life'



Page 4

<sup>1</sup>Stonewall 2010 'Unhealthy Attitudes: The treatment of LGBT people within social care services'  
<sup>2</sup>Stonewall 2017 'LGBT in Britain: Hate Crime and Discrimination'

## Existing service provider



**OPENING DOORS  
LONDON**



**stonewall  
housing**

safe spaces for LGBT people

## Existing housing providers



## Vision

To provide residential and community spaces for the older LGBT+ community within which they can feel secure and less isolated at a time of greater vulnerability

## Funders & Investors



## First 18 months

Research, development and community engagement

Development partner



Pro bono partners



Operational partner







Lewisham

# TONIC

A fresh approach to LGBT+ older living

James Greenshields



Lewisham



Lewisham

This page is intentionally left blank